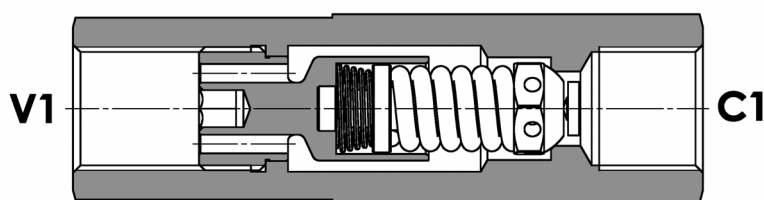
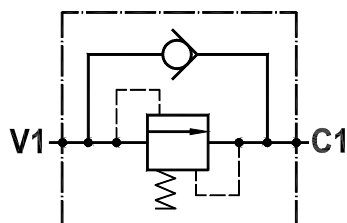


Valvola di sequenza ad azione diretta, taratura fissa, montaggio in linea
Direct acting, sequence valve, fixed setting, line mounted

Rev.01-2010/02



SPECIFICHE TECNICHE

Materiali: corpo in acciaio zincato, parti interne in acciaio trattato termicamente.

Portata: 30 l/min

Taratura max.: 80 bar

Pressione max.: 350 bar

Peso: 0,200 Kg

TECHNICAL SPECIFICATIONS

Materials: body in steel zinc plated, internal parts are in hardened steel.

Rated flow: 30 l/min

Max. setting: 80 bar

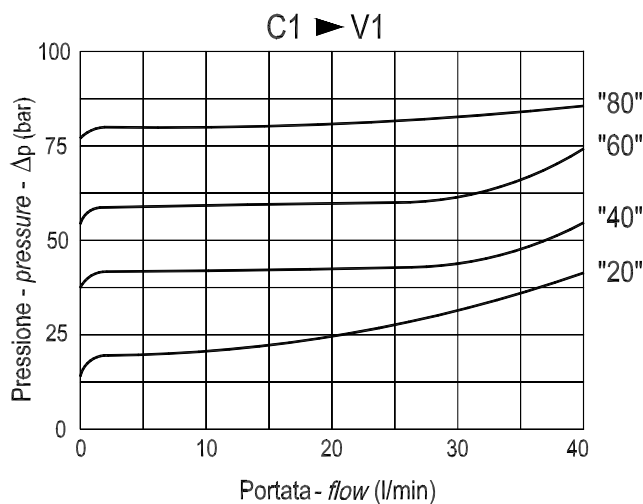
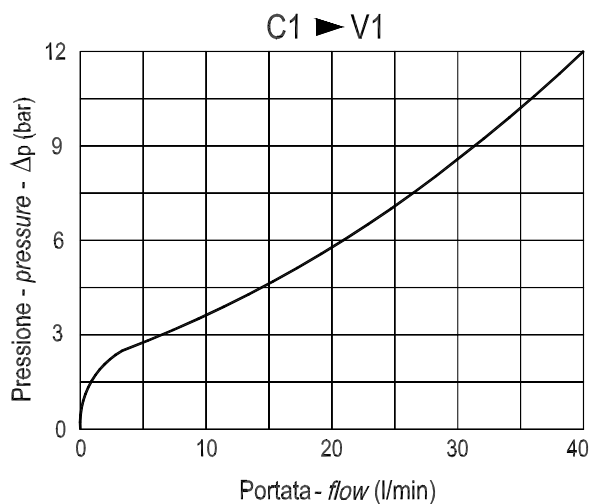
Max. pressure: 350 bar

Weight: 0,200 Kg

DIAGRAMMA PERDITE DI CARICO - PRESSURE DROP CURVES

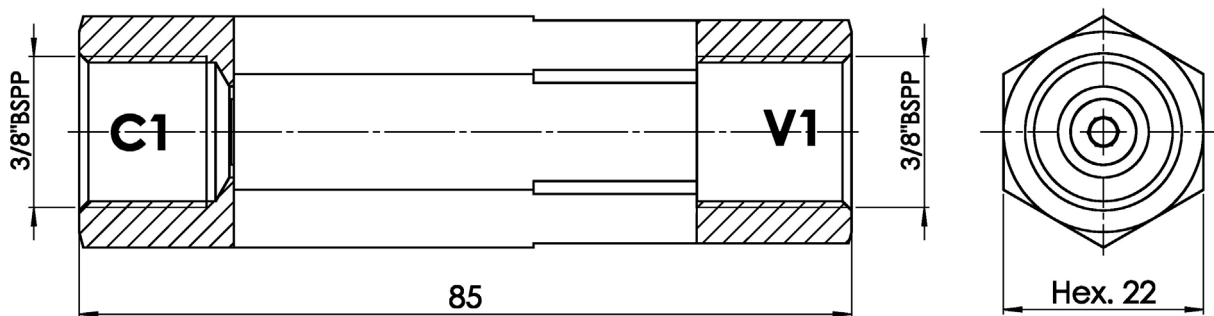
Viscosità olio 24 mm²/sec. (3,5 °E)
 Temperatura 50 °C

Oil viscosity 24 mm²/sec. (3,5 °E)
 Temperature 50 °C



Valvola di sequenza ad azione diretta, taratura fissa, montaggio in linea
Direct acting, sequence valve, fixed setting, line mounted

Rev.01-2010/02



ESEMPIO DI ORDINAZIONE - ORDERING CODE EXAMPLE

F P S Q L **D** **3 / 8** **2 0**

20 = 20 BAR
 40 = 40 BAR
 60 = 60 BAR *
 80 = 80 BAR

Taratura fissa valvola
 Valve fixed setting